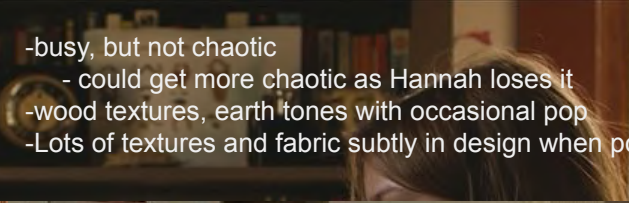






## HIDDEN SETS PT 1





- busy, but not chaotic
- could get more chaotic as Hannah loses it
- wood textures, earth tones with occasional pop
- Lots of textures and fabric subtly in design when possible

## HANNAH'S APT



Sewing machine instead of desktop PC

-PACKED  
fashion sketchbooks



-pasted on walls are images of what she aspires to be. A visual thinker/artist.

-likes to buy items that have already been well-loved. Vintage photographs...etc.



LATE WORK NIGHT













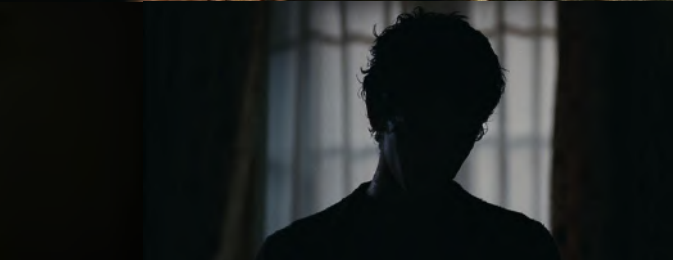
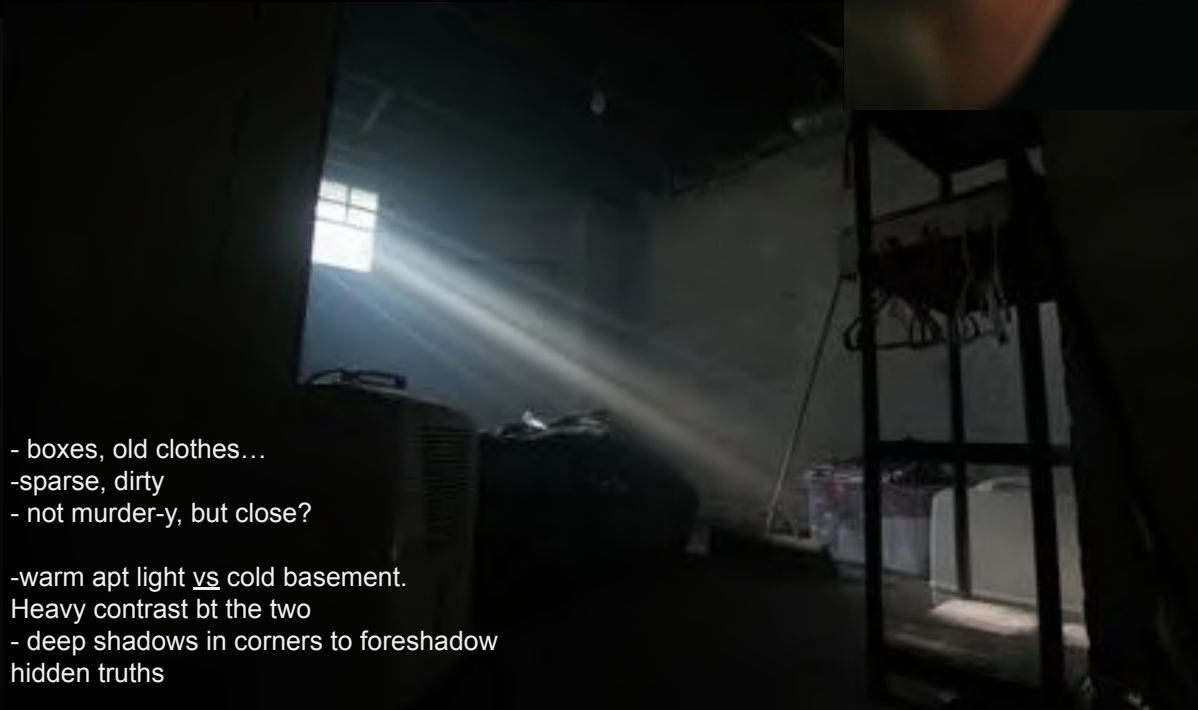




HANNAH'S BATHROOM



# HANNAH'S BASEMENT



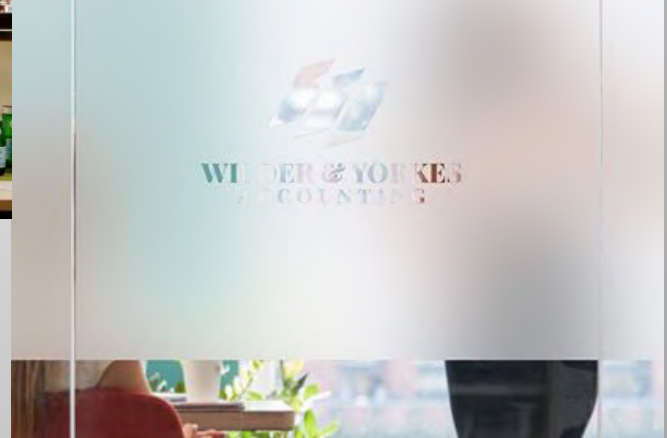
- boxes, old clothes...
- sparse, dirty
- not murder-y, but close?

- warm apt light vs cold basement.  
Heavy contrast bt the two  
- deep shadows in corners to foreshadow  
hidden truths



# CRISTEAN'S OFFICE

- minimal, sleek
- cold and aggressively modern



- mirror, shows how vain
- 86 anything living though
- black/white/grey/silver only, occasional pop of color, but very minimal



# VOGUE

MAR

THE  
SPRING  
FASHION  
ISSUE

THE ULTIMATE  
WORKING  
FROM HOME  
WARDROBE

DESIRE &  
DISABILITY:  
ONE WOMAN'S  
STORY

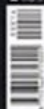
RISE UP:  
THE 14 NEW  
CREATIVES  
SHAPING OUR  
FUTURE

AT HOME  
WITH

Angelina  
Jolie

EL PAÍS

Nº 14 MARZO 2015



3C

# CON

HOMBRES & ESTILOS

Complete

AL PACINO  
JONATHAN COE  
NATASHA YAROWENKO  
TOMMY HILFGER  
RODRIGO SANTORO  
BEN BARNES

NICK JONAS

LOS PROBLEMAS CRECEN



- open design, cold
- lots of light coming in
- black and white.
- Nervewracking-ly clean











## DNA-ERS MEET UP





-muted colors overall  
-sparse walls, overall not too busy. Everything's out in the open, no secrets...presumably

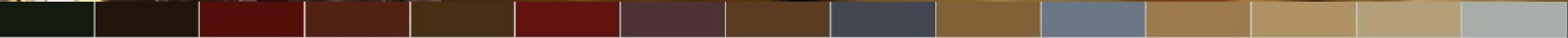


CLAUDIA'S APT





KAELIN'S APT





Quisus  
Up to £2,000 to your net

毛泽东思想万岁



KAELIN'S BATHROOM

HOSPITAL





BOILER ROOM





CLAUDIA END MONTAGE



# SMALL HOUSE - UPSTATE NY



ATTIC



